



CONTINENTAL PRECIOUS MINERALS INC.

**Defining a
world-class
polymetallic
resource**

TSX: CZQ

www.czqminerals.com

Forward Looking Statements

Certain statements contained in this presentation, including information as to the future financial or operating performance of Continental Precious Minerals and its projects, constitute forward-looking statements. All statements, other than statements of historical fact, are forward-looking statements. The words "believe", "expect", "anticipate", "contemplate", "target", "plan", "intend", "continue", "budget", "estimate", "may", "will", "schedule" and similar expressions identify forward-looking statements. Forward-looking statements include, among other things, statements regarding targets, estimates and assumptions in respect of mineral production and prices, operating costs and results, capital expenditures, mineral reserves and mineral resources and anticipated grades and recovery rates.

Forward-looking statements are necessarily based upon a number of estimates and assumptions related to future business, economic, market, political, social and other conditions that, while considered reasonable by Continental Precious Minerals, are inherently subject to significant uncertainties and contingencies. Many known and unknown factors could cause actual events or results to differ materially from estimated or anticipated events or results reflected in such forward-looking statements. Such factors include, but are not limited to: competition; mineral prices; ability to meet additional funding requirements; exploration, development and operating risks; uninsurable risks; uncertainties inherent in resource estimates; factors associated with foreign operations and related regulatory risks; environmental regulation and liability; currency risks; effects of inflation on results of operations; factors relating to title to properties; dependence on key personnel; and share price volatility, and also include unanticipated and unusual events, many of which are beyond Continental Precious Minerals' ability to control or predict.

Continental Precious Minerals disclaims any intent or obligation to update any forward-looking statements, whether as a result of new information, future events or results or otherwise. All forward-looking statements made in this presentation are qualified by the foregoing cautionary statements. Investors are cautioned that forward-looking statements are not guarantees of future performance and, accordingly, not to put undue reliance on such statements.

Investment Highlights

- **Flagship property has massive polymetallic resource of over 2.8 billion tonnes**
 - Including 1.0 billion lbs U_3O_8 , 16.7 billion lbs V_2O_5 and 1.5 billion lbs Mo
- **Located in Sweden, Europe's largest metals exporter**
- **Metallurgical studies suggest potential high recoveries**
- **Strategic focus on joint venture with major mining companies**
- **\$24 million cash with no debt**
- **Attractive valuation**

Scandinavian Alum Shale Deposits

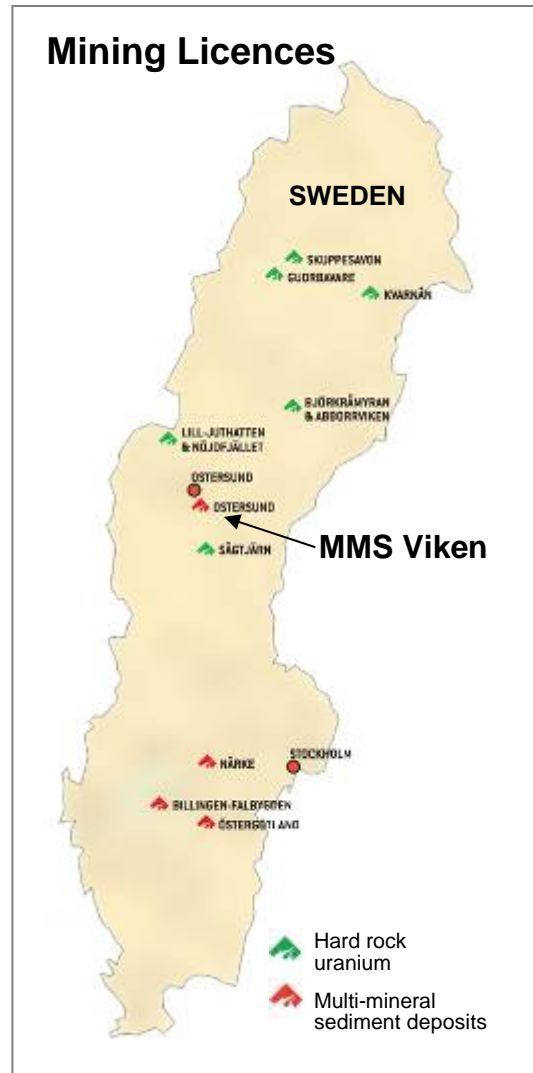


- Well known for high polymetallic content
- Europe's largest known uranium resource
- CZQ has among the most prospective landholdings



CZQ has Significant Landholding in Sweden

Mining Licences



- 82 mineral exploration licences
- Continuing to increase land holdings
- Sufficient capital to self-fund exploration

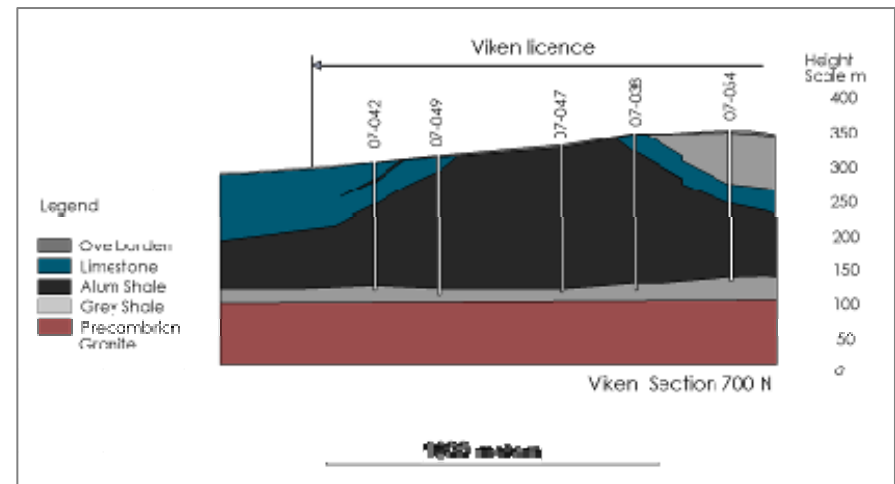
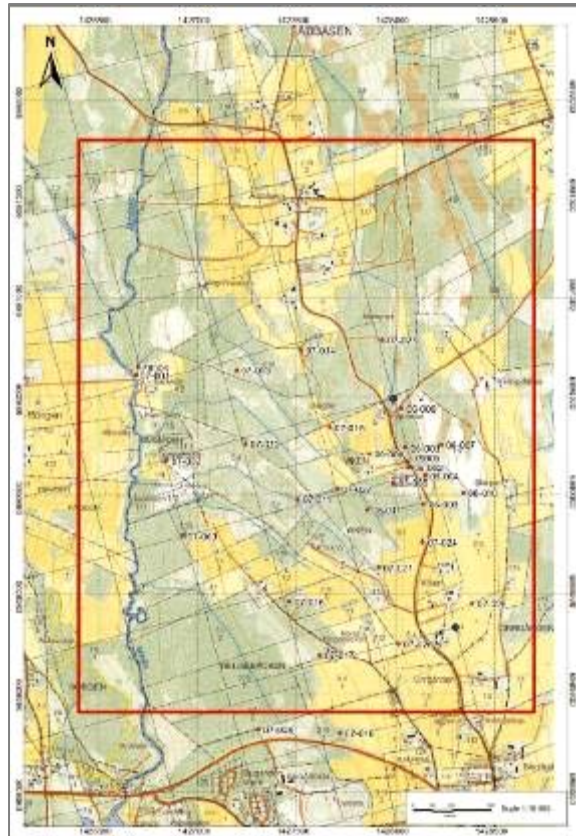
Massive Inferred Resource Base

		U_3O_8	V_2O_5	Mo	Ni
INDICATED RESOURCE	tonnes in 000's	23,610	23,610	23,610	23,610
	Grade (lbs/ton)	0.38	6.25	0.56	0.63
	Grade (%)	0.019	0.313	0.028	0.032
	lbs metal/oxide in 000's	9,944	162,751	14,678	16,500
		U_3O_8	V_2O_5	Mo	Ni
INFERRED RESOURCE	tonnes in 000's	2,830,757	2,830,757	2,830,757	2,830,757
	Grade (lbs/ton)	0.33	5.36	0.49	0.65
	Grade (%)	0.017	0.268	0.024	0.032
	lbs metal/oxide in 000's	1,037,661	16,716,126	1,516,487	2,015,742

1. Mineral resources which are not mineral reserves do not have demonstrated economic viability. The estimate of mineral resources may be materially affected by environmental, permitting, legal, title, taxation, socio-political, marketing or other relevant issues.
2. The quantity and grade of reported inferred resources in this estimation are uncertain in nature and there has been insufficient exploration to define these inferred resources as an indicated or measured mineral resource and it is uncertain if further exploration will result in upgrading them to an indicated or measured mineral resource category.
3. The mineral resources in this news release were estimated using the Canadian Institute of Mining, Metallurgy and Petroleum (CIM) Standards on Mineral Resources and Reserves, Definitions and Guidelines prepared by the CIM Standing Committee on Reserve Definitions and adopted by CIM Council December 11, 2005.



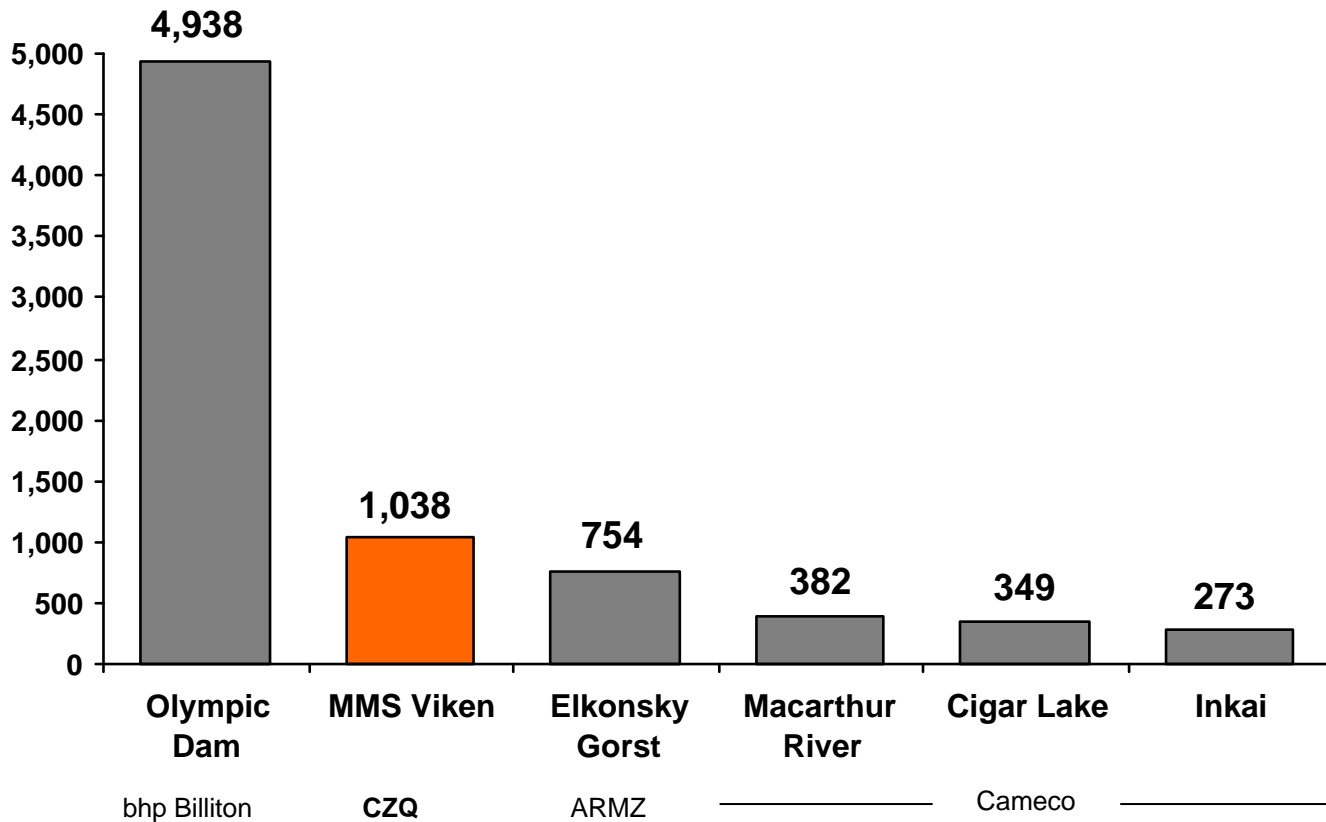
Large Tonnage Mine Potential at Viken



- Resource available from surface to 200m
- 1.5km wide by 2km long and open at length

A World-Class Uranium Deposit...

Selected Uranium Deposits
(millions of pounds)



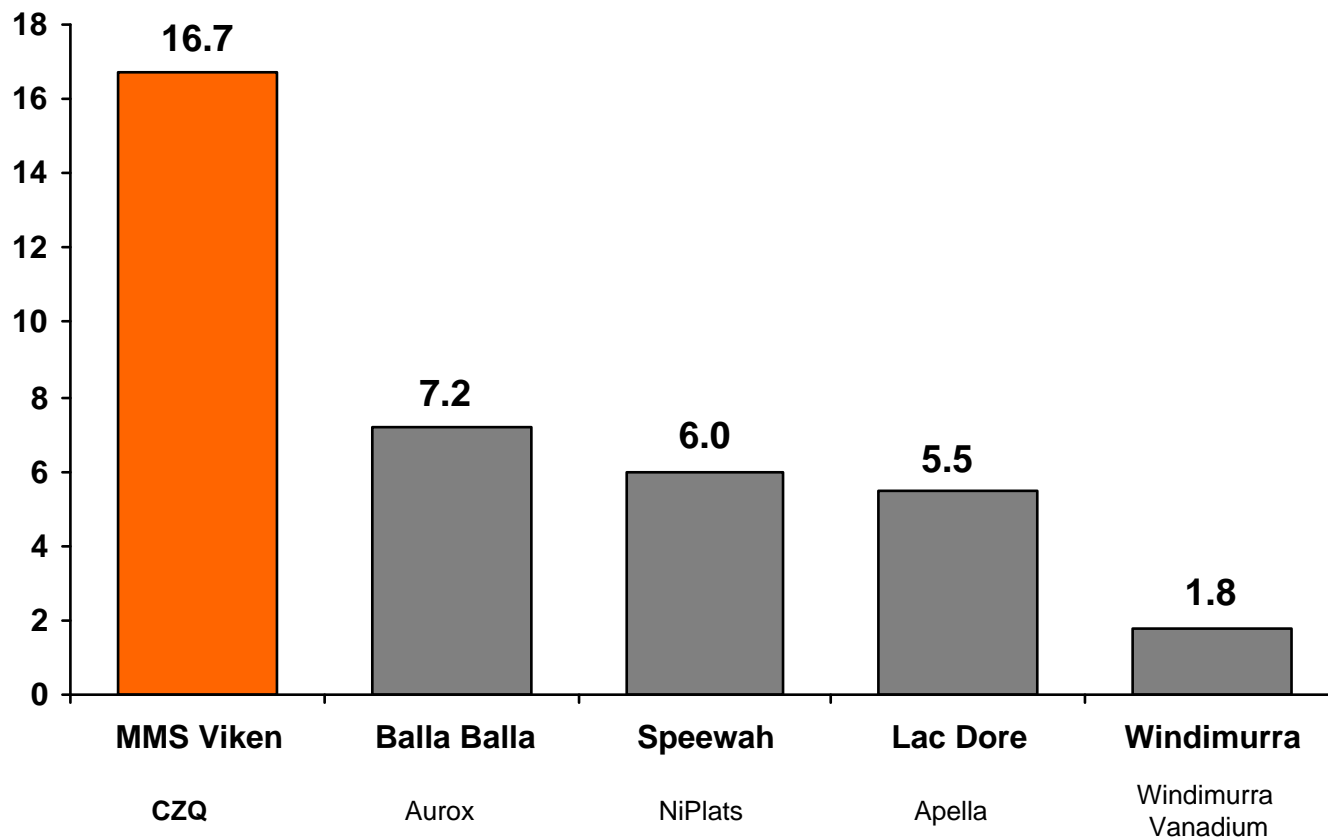
**CONTINENTAL
PRECIOUS**
MINERALS INC.

Source: Company annual filings and public information. Note that the deposits selected are not representative of all uranium deposits and should not be considered a ranking. The data presented includes both reserves and resources and may not comply with NI43-101 reporting standards. The data reported for MMS Viken is an inferred resource which may have no economic value.

With World-Leading Vanadium...

Selected Vanadium Deposits

(billions of pounds)

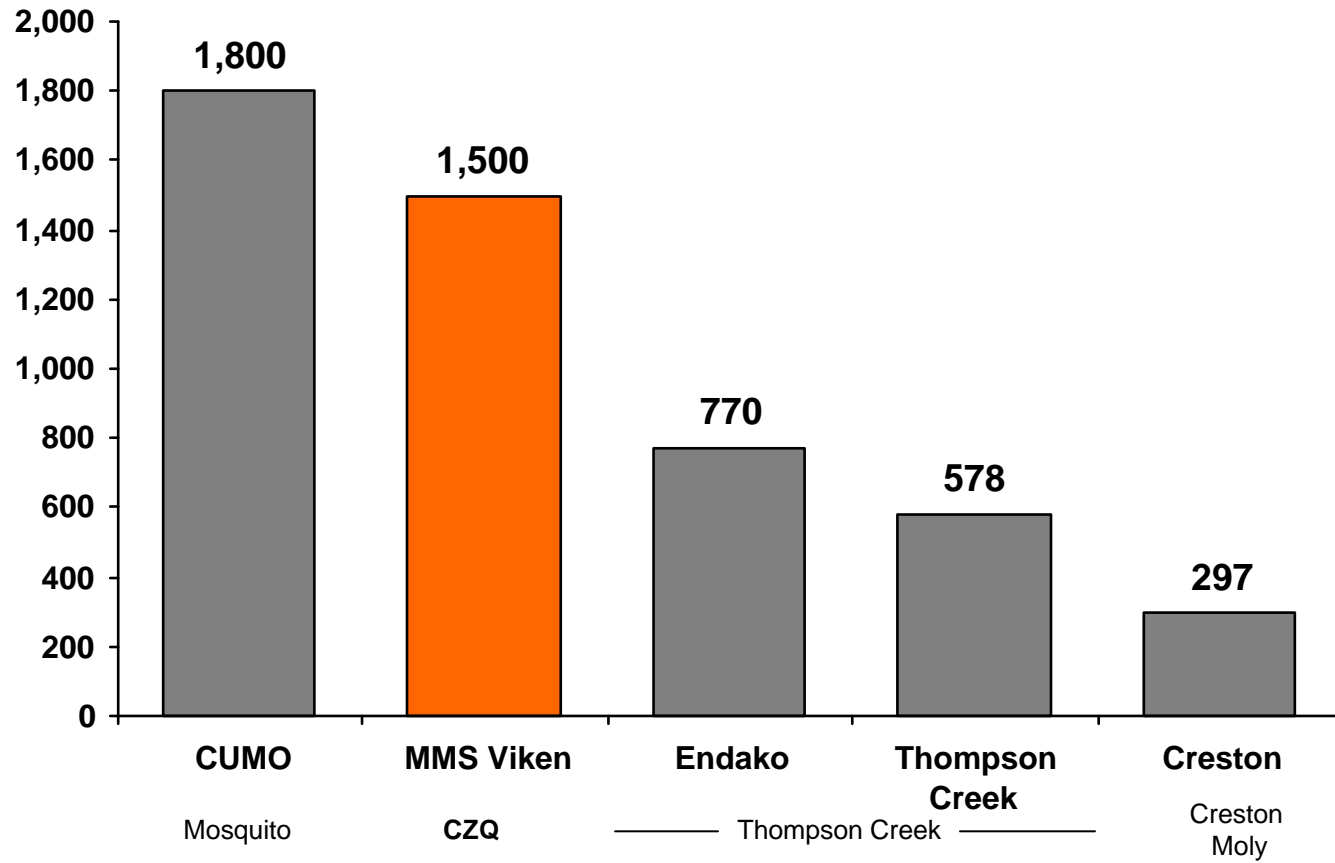


**CONTINENTAL
PRECIOUS**
MINERALS INC.

Source: Company annual filings and public information. Note that the deposits selected are not representative of all vanadium deposits and should not be considered a ranking. The data presented includes both reserves and resources and may not comply with NI43-101 reporting standards. The data reported for MMS Viken is an inferred resource which may have no economic value.

World-Class Molybdenum...

Selected Molybdenum Deposits
(millions of pounds)



Source: Company annual filings and public information. Note that the deposits selected are not representative of all molybdenum deposits and should not be considered a ranking. The data presented includes both reserves and resources and may not comply with NI43-101 reporting standards. The data reported for MMS Viken is an inferred resource which may have no economic value.



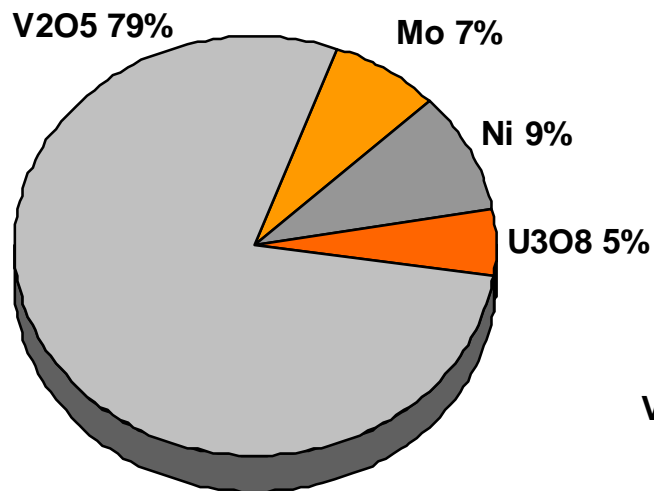
And a Suite of Other Minerals

Element	Jamtland County Black Shale (% by weight)	Viken MMS Inferred Resource Grade (%)
Carbon (Organic)	14.2000%	
Aluminum	6.3000%	
Sulfur	4.4000%	
Potassium	3.8000%	
Iron	3.4000%	
Calcium	2.3000%	
Carbon	0.6200%	
Magnesium	0.5800%	
Titanium	0.3900%	
Vanadium	0.1600%	0.268%
Sodium	0.0600%	
Molybdenum	0.0460%	0.024%
Nickel	0.0440%	0.032%
Zinc	0.0270%	
Uranium	0.0245%	0.017%
Arsenic	0.0160%	
Copper	0.0138%	
Chromium	0.0112%	

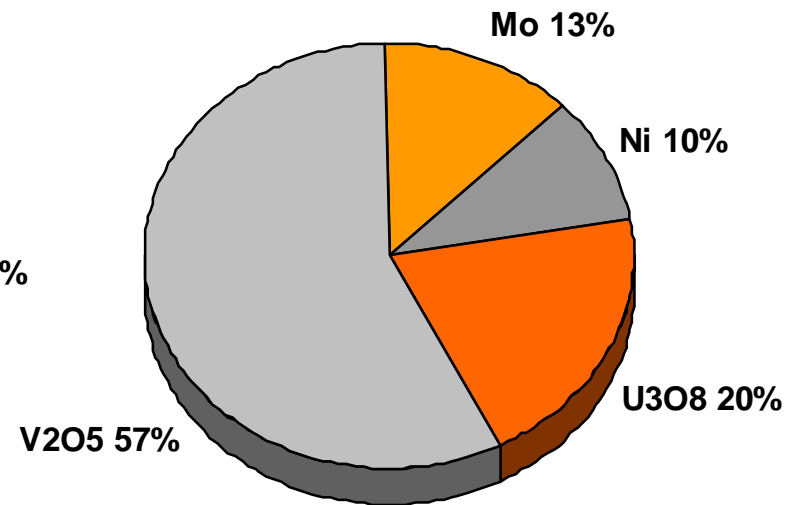


Contained Metal at Viken

By Contained Pounds



By Value



*Assuming \$40/lb U3O8, \$7.00/lb V2O5, \$17.00/lb Mo, \$10.00/lb Ni



Positive Preliminary Metallurgical Results

- **Significant metals recovery from ore samples**
 - U_3O_8 90%
 - V_2O_5 70%
 - Mo 90%
- **Tests conducted by Process Research ORTECH**
- **Detailed bench scale tests underway for process optimization**
 - Results to be used in designing pilot plant scale tests



Sweden: An Optimum Mining Location

- **Politically stable and mining friendly**
- **Europe's largest mineral exporter**
 - 82 active mining projects. Mining variety of base and precious metals.
 - Boliden, Freeport McMoRan, Lundin, Beowulf, Gold Ore Resources, Dragon Mining and many more
- **Allows 100% foreign ownership of mines**



Current Mining Projects in Sweden

BASE METALS

2. Viscaria copper, zinc
3. Rakkurijärvi copper, gold, iron
4. Norrbotten copper, gold
5. Liikavaara Östra copper, gold
6. Aitik copper, silver, gold
7. Majves copper, gold
8. Ballek copper, gold
9. Jervas copper
10. Uma copper, zinc, lead, silver
11. Notträsk nickel, PGE
12. Storbodsund nickel, copper, cobalt
13. Ersmarksberget zinc, gold
14. Eva zinc, copper, silver
15. Rönnbäcken nickel
16. Lainejaur nickel
17. Storliden zinc, copper
18. Remdalen copper, zinc, gold
19. Rackejaur zinc, copper, silver, gold
20. Svärträsk zinc, lead, silver
21. Vindelgransele zinc, copper, lead, silver
22. Stekenjokk zinc, lead, copper, silver, gold
23. Maurliden zinc, copper, silver, gold
24. Kristineberg zinc, silver, copper, gold, lead
25. Norrliden zinc, copper
26. Petiknäs zinc, silver, lead, copper, gold
27. Renström copper, zinc, lead, silver, gold
28. Östra Åkulla zinc, silver, copper, gold, lead
29. Boliden copper, gold
30. Långträsk zinc, copper, lead, silver
31. Lappvattnet nickel
32. Ormsjö lead, silver
33. Lövstrand lead
34. Rörmryberget nickel
35. Hoting nickel, copper
36. Bellviksberg zinc, lead, silver
37. Granberget zinc, lead
38. Rockliden copper, zinc, lead, silver, gold
39. Storkullen zinc, gold
40. Slättberg nickel
41. Falun copper, gold
42. Garpenberg zinc, silver
43. Lovisagruvan zinc, lead, silver
44. Dingelvik copper, silver
45. Zinkgruvan zinc, lead, silver, copper
46. Tomtebo
47. Vitturn
48. Sala

IRON

49. Kiirunavaara
50. Mertainen
51. Gruvberget
52. Leveäniemi
53. Stora Sahavaara
54. Malmberget
55. Grängesberg
56. Dannemora

GOLD

57. Grundträsk
58. Vargbäcken
59. Älgräsk
60. Barsele
61. Björkdal
62. Stortjärnhobben
63. Svartliden
64. Fäboliden
65. Enåsen
66. Solvik
67. Gladhammar

URANIUM

68. Kvarnån
69. Norr Döttern
70. Pleutajokk
71. Duobblon
72. Täsjö
73. Björkråmyran
74. Lilljuthatten
75. Hotagen
76. Viken
77. Southern Östersund Area
78. Storsjö

OTHER

79. Routevare titanium, iron
80. Storuman fluorite
81. Sumåssjön vanadium
82. Olserum REE



In Favour of Uranium Mining



- No legal restrictions to uranium mining
- In 2009, Swedish PM stated that the government is pro uranium mining
- History of previous operating uranium mines in production and successful remediation



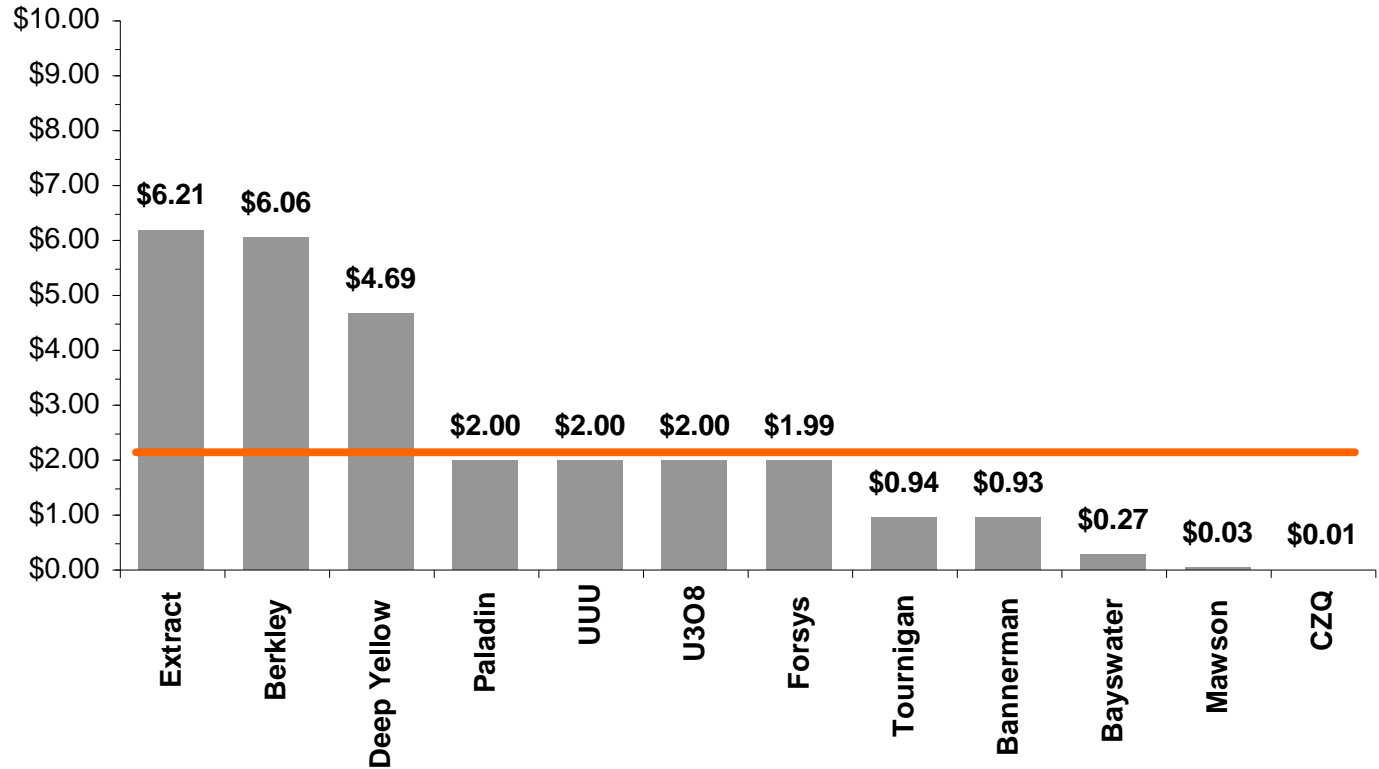
Viken Development Plan



- **Continue delineating and upgrading resource base**
- **Complete economic scoping study**
- **Complete metallurgy and environmental studies**
- **Partner with major mining company**

Attractive Valuation

Uranium Comps by Resource by EV/lb



Comparable Valuations

February 1, 2010

Company	Symbol	Exchange	Price	Implied EV/lb valuation	Market Cap (MM)	Enterprise Value (MM)	Mkt/lb	EV/lb	Avg. Grade	Resources and Reserves (MM lbs)				
										P&P	M&I	Inferred	Historical	Total
Mawson Resources Ltd.	MAW	TSX	\$0.37	\$16.23	\$14.06	3.4	\$0.11	\$0.03	0.031%	0.00	0.12	11.90	112.90	124.92
Berkeley Resources Ltd.	BKY	ASK	\$1.37	\$0.67	\$169.15	158.39	\$6.47	\$6.06	0.051%	0.00	4.80	21.33	0.00	26.13
Tournigan Energy Ltd.	TVC	TSXV	\$0.28	\$0.51	\$34.36	30.67	\$1.06	\$0.94	0.416%	0.00	4.80	21.33	0.00	26.13
Bannerman Resources	BAN	TSX	\$0.66	\$1.92	\$133.13	113.28	\$1.09	\$0.93	0.022%	0.00	82.24	39.36	0.00	121.60
Bayswater Uranium Corp	BYU	TSXV	\$0.76	\$8.19	\$11.73	6.89	\$0.46	\$0.27	0.090%	0.00	1.60	10.16	13.87	25.62
Deep Yellow Ltd.	DYL	ASX	\$0.27	\$0.24	\$303.31	258.71	\$5.50	\$4.69	0.027%	0.00	7.41	47.74	0.00	55.14
Forsys Metals Corp.	FSY	TSX	\$4.00	\$3.57	\$315.96	292.99	\$2.15	\$1.99	0.014%	60.50	77.20	9.50	0.00	147.20
Extract Resources	EXT	ASX	\$8.04	\$6.30	\$1,841.00	1813.84	\$6.30	\$6.21	0.047%	0.00	24.31	267.80	0.00	292.11
Average							\$2.89	\$2.64	0.087%	7.56	26.54	53.21	15.85	103.16
Continental Precious Minerals	CZQ	TSX	\$0.90	\$102.50	\$46.25	21.96	\$0.04	\$0.02	0.019%	0.00	9.94	1037.66	19.63	1067.24

Source: Octagon Capital Corporation

- **Lowest valuation of early-stage public uranium exploration companies**



Proven Management Team

- **Ed Godin**
President and CEO
 - founded CZQ in 1987
 - over \$75 million in financings
- **Mike Bromley-Challenor**
EVP and Director of Exploration
 - A leading expert in uranium and oil shales with over 35 years of experience in Sweden
- **Gustav Åkerblom**
EVP and Director of Environmental Management
 - Key liaison with Swedish authorities



Forsmark Nuclear Power Plant, Sweden

Independent Board Members

- **Patricia Sheahan, Chairman**
 - 35 years mining and geology experience
- **Gerard Osika**
 - financial consultant
- **Herb Dhaliwal**
 - former Minister of Natural Resources



Vanadium Redox Battery, Source: Cellstrom GmbH

Investment Highlights

- **Flagship property has massive polymetallic resource of over 21 billion tonnes**
 - Including 1.0 billion lbs U_3O_8 , 16.7 billion lbs V_2O_5 and 1.5 billion lbs Mo
- **Located in Sweden, Europe's largest metals exporter**
- **Metallurgical studies suggest potential high recoveries**
- **Strategic focus on joint venture with major mining companies**
- **\$24 million cash with no debt**
- **Attractive valuation**

Market Information*

▪ Exchange and Symbol:	TSX — CZQ
▪ Shares Outstanding:	51.5 million
▪ Warrants:	4.4 million
▪ Options:	7.3 million
▪ Fully diluted:	66.1 million
▪ 52 week high/low:	\$1.47/ 0.35
▪ Price:	\$0.85
▪ Market Capitalization:	\$44 million
▪ Average 3-month daily volume:	220,000
▪ Working Capital:	\$24.3 million



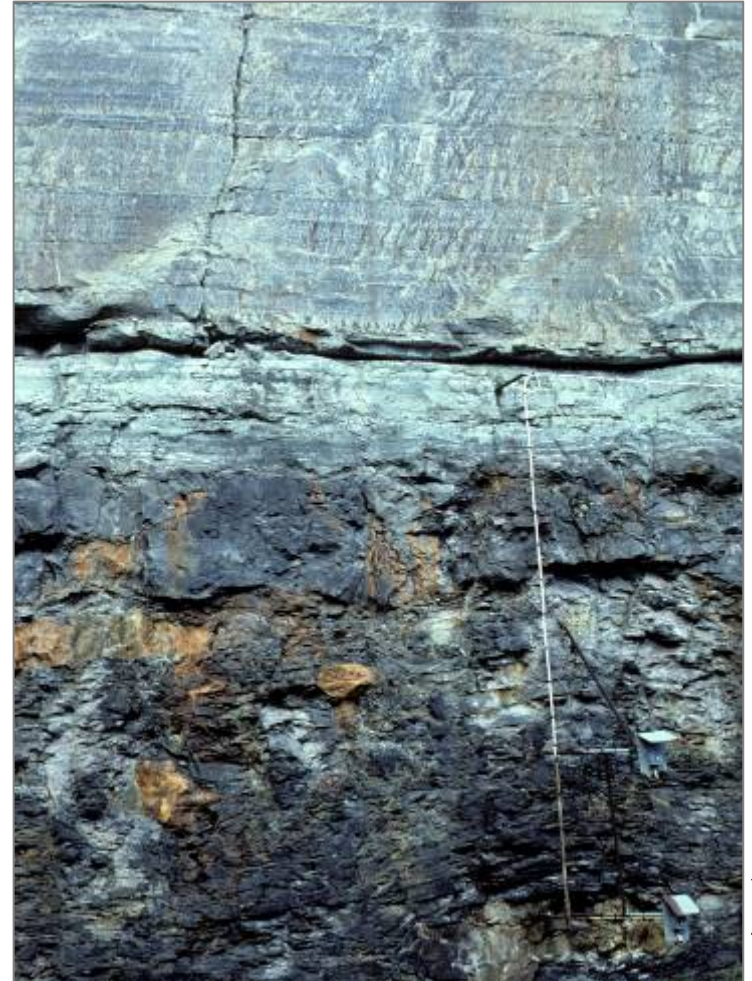
Investor Contacts

Ed Godin
416-805-3036
godine@rogers.com

Morris Tenaglia
416-726-2144
morrlist@rogers.com

Corporate Office
50 Richmond Street East
Suite 101
Toronto, Ontario
M5C 1N7

Swedish Exploration Office
Eriksgatan 17, S-771 31,
Ludvika, Sweden



Ranstad Alum Shale

Creative Commons photo by Yvon



CONTINENTAL PRECIOUS MINERALS INC.

**Defining a
world-class
polymetallic
resource**

TSX: CZQ

www.czqminerals.com